

# Big5 Safari Group Tour

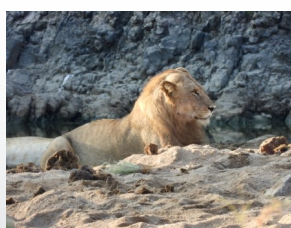
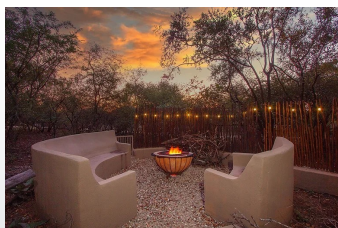
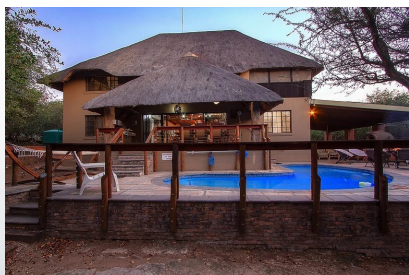
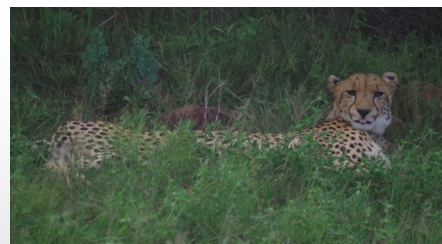
5 June - 19 June 2026

Group Tour 2 to 12

ALL EXCURSIONS ARE WEATHER DEPENDENT

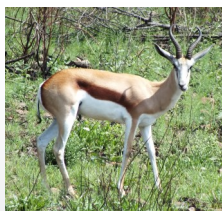
## Dinokeng

While staying in Dinokeng you can go on Safaris in Dinokeng Game Reserve where you can maybe see some of the Big 5



## Kruger National Park

Enjoy Safaris in the Kruger National Park where you can see some of the Big 5, then you can relax at the accommodation while watching more wild animals near the house.



## Pilanesberg National Park

Go on Safaris in the Pilanesberg National Park where you can maybe see some of the Big 5.



## **Itinerary - LTA Big5 Tour - Full board (3 meals a day)**

### **ALL BEWERAGES ARE FOR OWN ACCOUNT**

**Day 1: Friday, 5<sup>th</sup> June,2026** – We will meet you at the OR Tambo International Airport and we will take you to Dinokeng Game Reserve accommodation, meals are dependent on flight times - Sleep in the Dinokeng Game Reserve area.

**Day 2: Saturday, 6<sup>th</sup> June,2026** – Early Morning **Safari** (3 hours), lunch at Arlington Brewery – Rest in the afternoon. Sleep in the Dinokeng Game Reserve area.

**Day 3: Sunday, 7<sup>th</sup> June,2026** – Early Morning **Safari**, Lunch at Veldjie Kiosk – Late Afternoon **Safari**. Sleep in the Dinokeng Game Reserve area.

**Day 4: Monday, 8<sup>th</sup> June,2026** – Breakfast in the Dinokeng area – then travel from Dinokeng to Marloth Park – stop at Alzu, lunch at Viva – dinner at Marloth Park.

**Day 5: Tuesday, 9<sup>th</sup> June,2026** – Early Morning **Safari** (6 hours) in Kruger National Park, Rest in Afternoon. Sleep in Marloth Park.

**Day 6: Wednesday, 10<sup>th</sup> June,2026** – Early Morning **Safari** (6 hours) in Kruger National Park, Rest in Afternoon. Sleep in Marloth Park.

**Day 7: Thursday, 11<sup>th</sup> June,2026** – Early Morning **Safari** (6 hours) in Kruger National Park, Rest in Afternoon. Sleep in Marloth Park.

**Day 8: Friday, 12<sup>th</sup> June,2026** – After breakfast, drive from Marloth Park to Dinokeng, lunch on the way. Sleep in the Dinokeng Game Reserve area.

**Day 9: Saturday, 13<sup>th</sup> June,2026** – Early Morning **Safari** in the Dinokeng Game Reserve, Late Afternoon **Safari**. Sleep in the Dinokeng Game Reserve area.

**Day 10: Sunday, 14<sup>th</sup> June,2026** - Early Morning **Safari** in the Dinokeng Game Reserve, Visit Lion and Cheetah Sanctuary. Sleep in the Dinokeng Game Reserve area.

**Day 11: Monday, 15<sup>th</sup> June,2026** – After Breakfast, travel to Lesedi Cultural Village for a show and lunch and then travel to Pilanesberg, sleep in the Pilanesberg area.

**Day 12: Tuesday, 16<sup>th</sup> June,2026** – Early Morning **Safari** and Late Afternoon **Safari** in the Pilanesberg National Park, sleep in the Pilanesberg area.

**Day 13: Wednesday, 17<sup>th</sup> June,2026** – Early Morning **Safari** and Late Afternoon **Safari**, sleep in the Pilanesberg area.

**Day 14: Thursday, 18<sup>th</sup> June,2026** – Early Morning **Safari** and Late Afternoon **Safari**, sleep in the Pilanesberg area.

**Day 15: Friday, 19<sup>th</sup> June,2026** – After Breakfast, travel from Pilanesberg to O R Tambo Airport, meals dependent on flight times.